

BORZALINO  
ITALIAN LUXURY LIVING

POUFFCLIO & GEA



# Pouff CLIO & GEA

Andrea Andretta design  
Production year 2018

Gemelli nella forma e nel tratto, i pouff sono disegnati su linee sinuose che esaltano la rigidità intrinseca della lastra metallica che dona corpo e presenza ma al tempo stesso equilibrio e leggerezza.

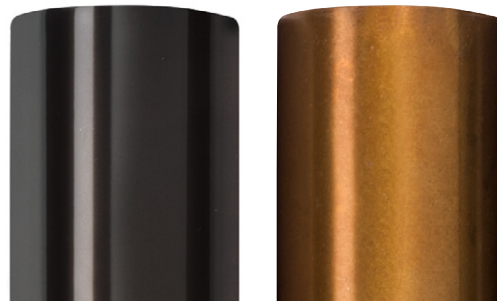
Twins when it comes to shape and styling. These footstools are created around a sinuous design that brings out the full rigidity of the metal sheet that adds body and style, but also balance and a sense of lightness at the same time.



GEA 40x40 h 45 / Seat leather art. TUSCANIA col. 21. Metal base finish col. Titanio.  
CLIO 40x40 h 45 / Seat leather art. TUSCANIA col. 21. Metal base finish col. Titanio.



filo tono su tono  
thread tone on tone  
fil ton sur ton  
Ton-in-Ton-Nahgarn



base in metallo  
metal base  
base en métal  
Metallbasis

**Struttura:** in metallo laccato o trattato galvanicamente.  
**Imbottiture:** seduta fissa in poliuretano espanso di densità 40Kg/m<sup>3</sup>.

**Framework:** metal with lacquered or galvanic finish.  
**Upholstery:** fixed seat in polyurethane foam, with a density of 40 kg/m<sup>3</sup>.

**Structure :** en métal laqué ou galvanisé.  
**Rembourrage :** siège fixe en polyuréthane expansé d'une densité de 40 kg/m<sup>3</sup>.

**Struktur:** aus lackiertem oder galvanisiertem Metall.  
**Polsterung:** Feste Sitzfläche aus Polyurethanschaum mit einer Dichte von 40 kg/m<sup>3</sup>.

**Per compilare in maniera corretta l'ordine  
To properly fill in the order  
Pour remplir la commande correctement  
Den Auftrag richtig zu füllen**

- 1** Scegliere il tipo rivestimento tra pelle o tessuto.  
Choosing the type of coating between leather or fabric.  
Choisir le type de revêtement entre Cuir ou Tissu.  
Wählen Sie den Bezug zwischen Leder oder Stoff.



- 2** Scegliere il colore filo per le cuciture (tono su tono o a contrasto).  
Choosing the thread color for stitching (tone on tone or contrast).  
Choisir la couleur du fil pour les coutures, ton sur ton ou au contraste.  
Wählen Sie die Garnfarbe für die Nähte (Ton-in-Ton oder Kontrast).



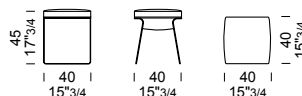
- 3** Scegliere la finitura della base in metallo.  
Choosing the finish of the metal base.  
Choisir la finition de la base en métal.  
Wählen Sie die gewünschte Farbe der Metallbasis.



CLIO 40x40 h 45 / Seat leather art. TUSCANIA col. 23. Metal base finish col. Burnished Bronze.

**40 h 45** - prof/depth/prof/Tiefe **40**

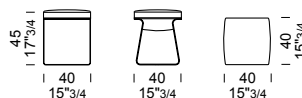
**EUGePOUF** /pouff  
/footstool  
/pouff  
/hocker



ALL 0,70 mt 1 m<sup>2</sup> 0,1 m<sup>3</sup> 18,6 kg

**40 h 45** - prof/depth/prof/Tiefe **40**

**EUCIPOUF** /pouff  
/footstool  
/pouff  
/hocker



ALL 0,70 mt 1 m<sup>2</sup> 0,1 m<sup>3</sup> 22,6 kg